

END CAP (BF)

SDR 11/17, PE2708/PE4710



COSMOIND USA

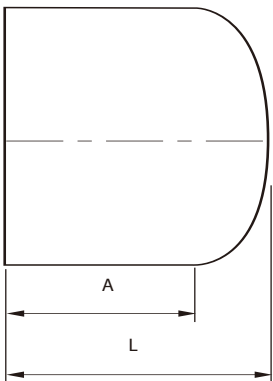
END CAP (BF) DIMENSION SHEET

- Manufactured in accordance with AWWA C901 & C906, ASTM D2513 & D3261 & D3350
- Certified to NSF/ANSI 61 and NSF/ANSI-372
- Produced by using a resin listed on the PPI TR-4
- Produced by Injection Molding
- Suitable for Water, Gaseous, Fluids and Slurries
- Excellent chemical resistance and corrosion resistance

(at 73.4 °F)

GRADE	Gas		Industrial	
	SDR17	SDR11	SDR17	SDR11
2708	62.5 psi	100 psi	100 psi	160 psi
4710	80 psi	125 psi	125 psi	200 psi

Unit : inch



DN	SDR	BF END CAP		Weight (lbs.)	Type	Item Code	
		L	A			Gas	Industrial
1/2" CTS	11	0.976	0.642	0.01	Injection (Socket)	COSB GI0600	COSB WI0600
1/2" IPS	11	1.077	0.730	0.02	Injection (Socket)	COSB GI0601	COSB WI0601
3/4" IPS	11	1.235	0.859	0.03	Injection (Socket)	COSB GI0602	COSB WI0602
1" IPS	11	1.402	0.929	0.05	Injection (Socket)	COSB GI0604	COSB WI0604
1 1/4" IPS	11	1.560	1.030	0.15	Injection (Socket)	COSB GI0605	COSB WI0605
1 1/2" IPS	11	1.689	1.093	0.13	Injection (Socket)	COSB GI0606	COSB WI0606
2" IPS	11	2.083	1.384	0.23	Injection (Socket)	COSB GI0607	COSB WI0607
2 1/2" IPS	11	2.081	1.336	0.32	Injection (Socket)	COSB GI0608	COSB WI0608
1" CTS	11	2.098	1.772	0.04	Injection (Butt)	COSB GI06009	COSB WI06009
1" IPS	11	2.098	1.772	0.04	Injection (Butt)	COSB GI06010	COSB WI06010
2" IPS	11	4.055	2.677	0.40	Injection (Butt)	COSB GI0601	COSB WI0601
4" IPS	11	4.291	3.307	0.96	Injection (Butt)	COSB GI0604	COSB WI0604
6" IPS	11	6.417	4.094	2.87	Injection (Butt)	COSB GI0606	COSB WI0606
8" IPS	11	8.583	4.803	6.31	Injection (Butt)	COSB GI0607	COSB WI0607
14" IPS	11	9.724	6.772	21.61	Injection (Butt)	COSB GI0610	COSB WI0610
16" IPS	11	11.063	7.205	31.66	Injection (Butt)	COSB GI0611	COSB WI0611
3" DIPS	11	4.960	3.346	1.20	Injection (Butt)	COSB GI0603D	COSB WI0603D
4" DIPS	11	5.236	3.425	1.87	Injection (Butt)	COSB GI0604D	COSB WI0604D

The product dimensions may change for quality improvement by manufacturer

